



# MONTHLY MEMBERSHIP PROGRESS REPORT

District 410 A

Results as of: 04/30/2018

GMT: RASHMI KOOVERJEE

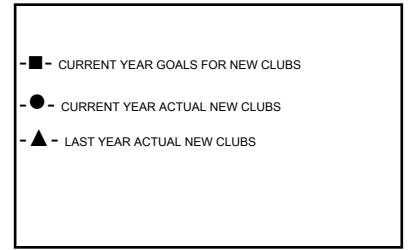
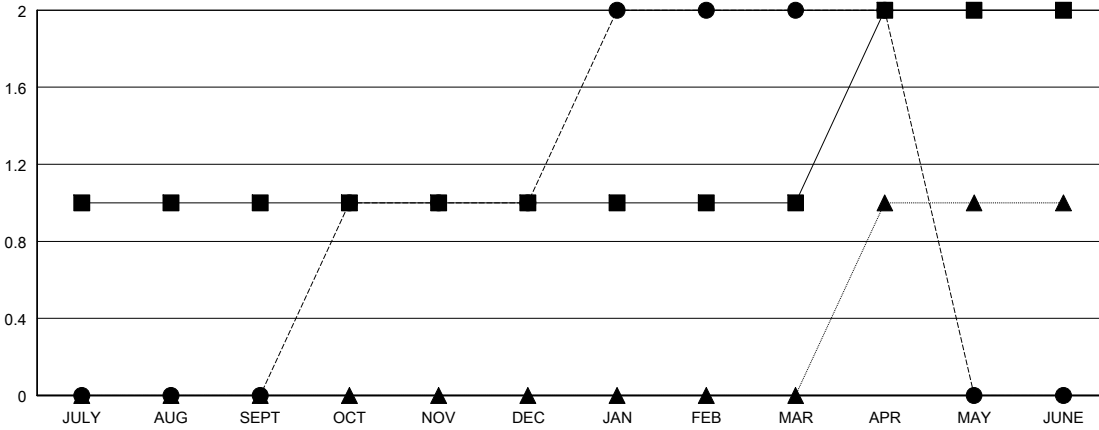
LOCATION REP OF SOUTH AFRICA

GMT CA

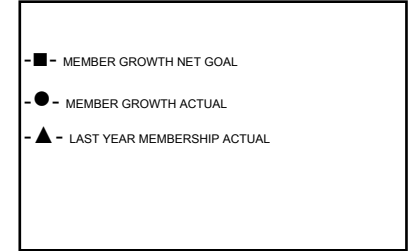
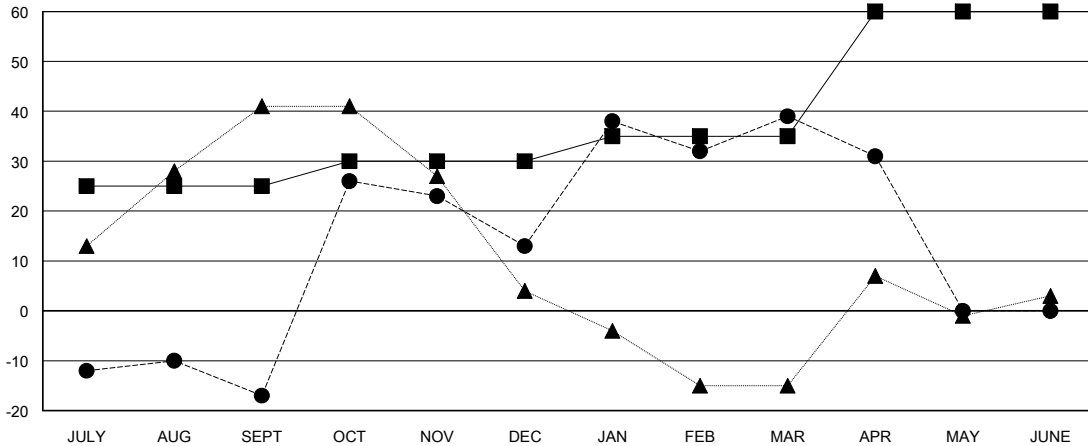
Clubs			
RESULTS FOR 2017-2018			
QUARTER	NEW CLUB GOAL	NEW CLUBS	DROPPED CLUBS
JULY/AUG/SEPT	1	0	0
OCT/NOV/DEC	0	1	0
JAN/FEB/MAR	0	1	0
APR/MAY/JUNE	1	0	0

Members			
RESULTS FOR 2017-2018			
QUARTER	MEMBER GROWTH NET GOAL	MEMBER GROWTH ACTUAL	DROPPED MEMBERS ACTUAL (including transfers)
JULY/AUG/SEPT	25	23	35
OCT/NOV/DEC	5	66	35
JAN/FEB/MAR	5	59	30
APR/MAY/JUNE	25	9	15

GOALS AND ACTUAL NEW CLUBS CUMULATIVE



GOALS AND ACTUAL MEMBERS CUMULATIVE



DROPPED CLUBS: 0	26 CLUBS OF 46 ADDED 1 OR MORE NEW MEMBERS	<u>GENDER DISTRIBUTION</u> MALE 525 (58.20%) FEMALE 377 (41.80%) Women Percentage Fiscal Year Goal: 40%
<u>DROPPED MEMBERS</u> DECEASED 11 CLUB CANCELLED 0 OTHER 104 TOTAL 115	<a href="#">CLICK HERE FOR CUMULATIVE MEMBERSHIP DATA</a>	TOTAL FAMILY UNIT MEMBERS 266 FAMILY MEMBERS PAYING HALF DUES 135